

Description

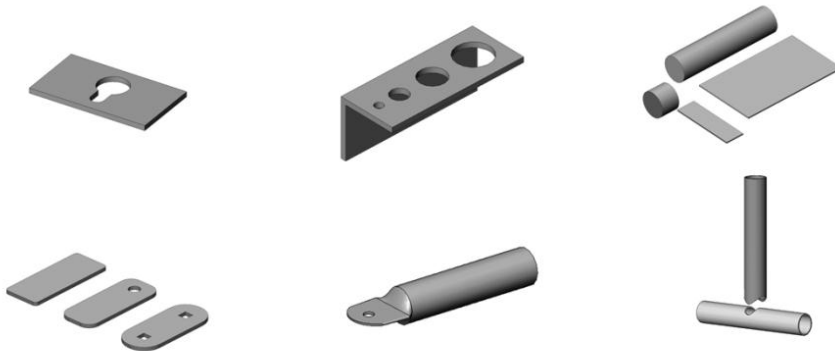
Hydraulic press from 15 up to 60 ton. Easy to use, flexible stroke adjustment and quick and easy tool setup with T-slot channel base plate. Integrated electrical cabinet and hydraulic unit on the back side.

Characteristics

- Force adjustment and pressure gauge
- Stroke adjustment
- Sensor for top and bottom position
- Quick tool change and fixation
- Front drawer for scrap collection
- Bi-manual switch or pedal actuation
- Front protection monitored by sensor
- Safety

Applications

- Cutting, punching, bending, deforming and other operations;
- Developed for metalworking and construction industry.



	PH15	PH25	PH40	PH60
Maximum height	360mm	350mm	310mm	325mm
Minimum height	260mm	250mm	210mm	210mm
Stroke	100mm	100mm	100mm	115mm
Base dimensions	500x300mm	440x300mm	600x400mm	600x400mm
Working height	1035mm	950mm	950mm	950mm
Force	15ton	25ton	40ton	60ton
Motor power	5,5cv	5,5cv	7,5cv 3ph	12cv 9Ph
Dimensions	1700x730x660mm	1750x910x770mm	1570x1060x600mm	2010x1090x600mm
Weight	475kg	650kg	1050kg	1270kg